



Integrated policy making on quiet urban areas

Miriam Weber Ph.D





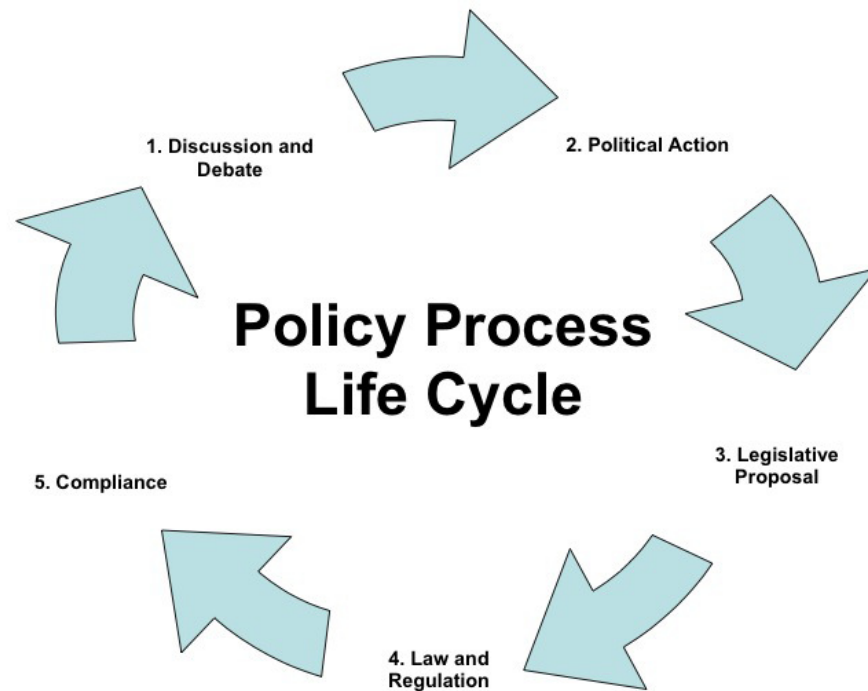
Content

- Policy, politics, politicians
- Policy effectiveness and instrument mixes
- It's all about framing...
- Resilient cities
- Policy integration
- Inspiration: examples of Rotterdam initiatives





Policy, politics, politicians





Policy problem framing (1)

- Noise = annoyance and sleep disturbance
- Needed action: limit noise exposure on dwellings
- Selected instruments:
 - National legislation (spatial planning)
 - EU legislation (immission limits (certain) noise sources)
 - END (mapping, action planning, and.....)



Policy problem framing (2)

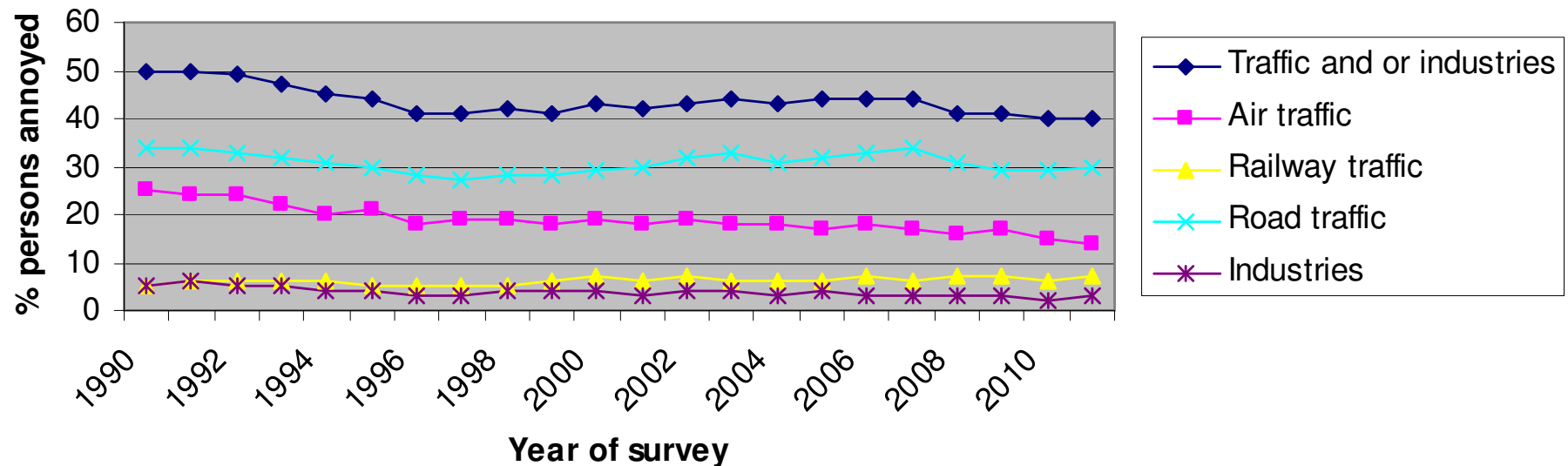
- **END (cont.).....protection of areas where the acoustic environment is good**
- **Noise = soundscape = perceived acoustic quality / appreciation by humans**

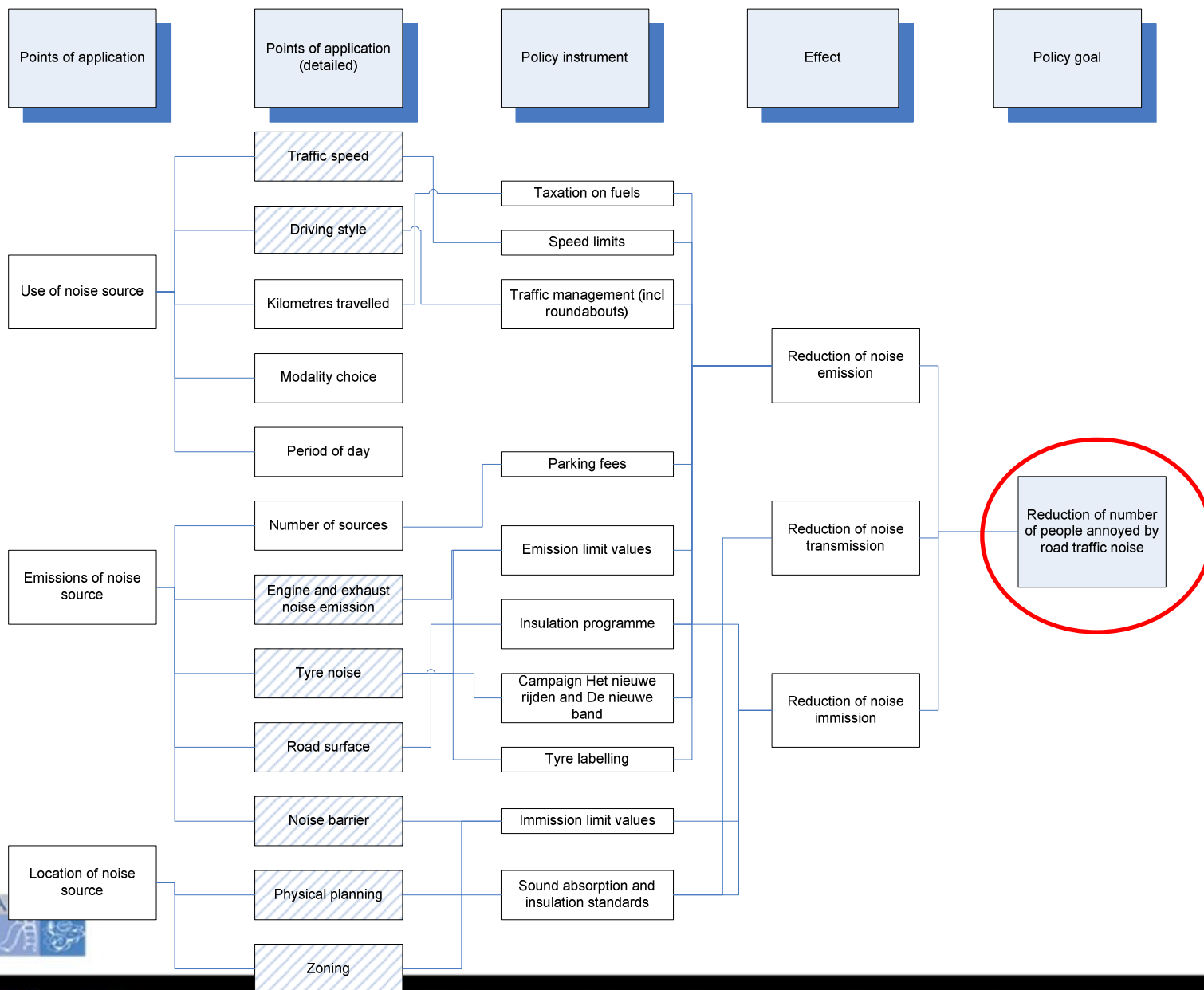


Picture: Organ of Corti near St. Paul's Cathedral London

Policy effectiveness and instrument mixes

Trends in noise annoyance in the Netherlands







It's all about framing....



It's all about framing.....

TABLE I. Listener state, typical activity

Listener state	Listening
In search	
In reading	



watching TV...	Urban use	Current policy
	Park, street, square, market, shops...	Soundscape design
	Kitchen, restaurant, bathroom...	Noise and soundscape
	Library, classroom, bedroom, living room...	Noise control



Sources: Andringa et al. (2013), RIVM (2013), and www.qside.eu



Resilient cities*

Urban resilience

is the capacity of **individuals, communities, institutions, businesses** and **systems** within a city to *survive, adapt, and grow* no matter what kind of **chronic stresses** and **acute shocks** they experience.

* source: Rockefeller Foundation and [100RESILIENTCITIES](#)



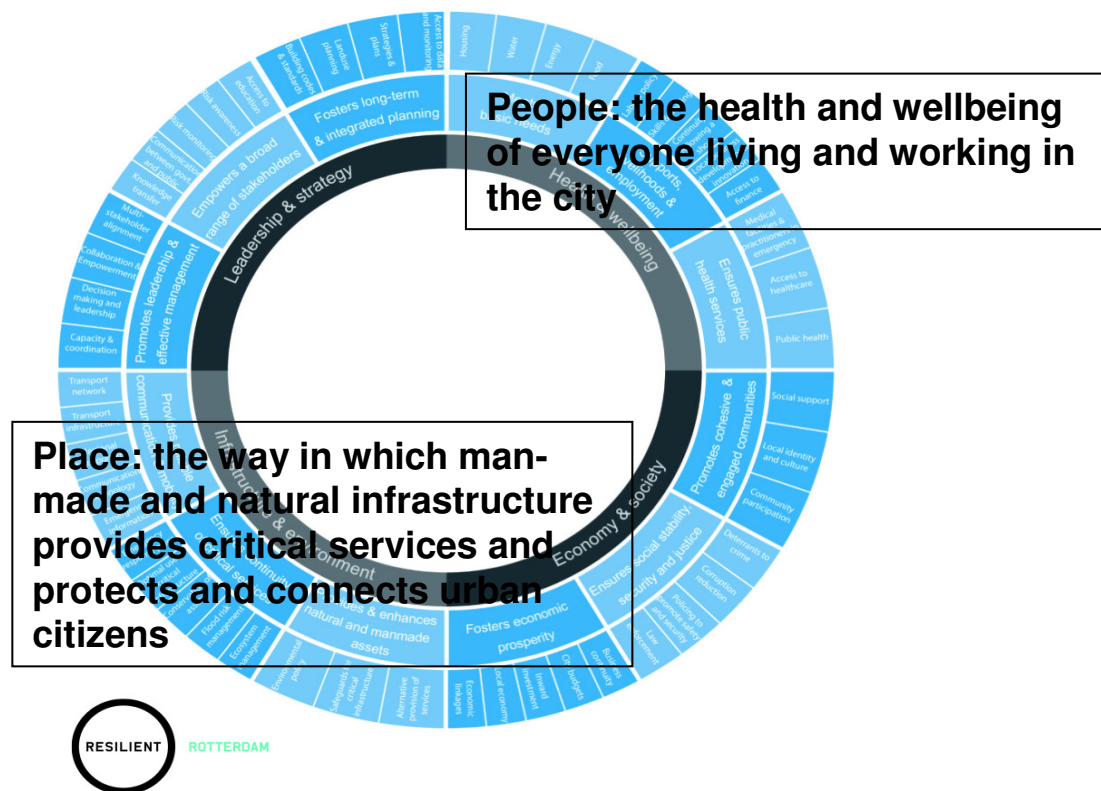
Resilient systems

Resilient systems exhibit certain qualities
that enable them to withstand, respond, and adapt
more readily to shocks and stresses

Reflective	Resourceful	Robust	Redundant	Flexible	Inclusive	Integrated
Ability to learn and act	...conceiving systems & assets that can withstand shocks & stresses as well as using alternative strategies to facilitate rapid recovery			...planned to take account of city-wide needs and promote coordinated actions	



City Resilience Framework



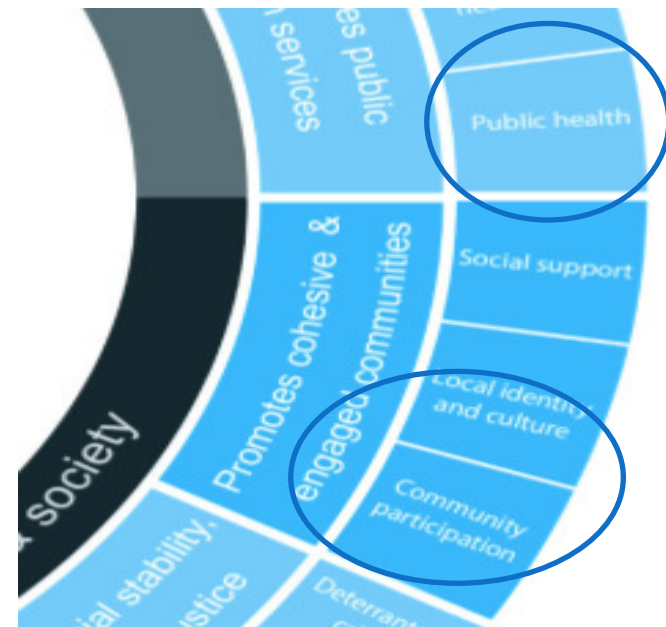
- City resilience has 4 key dimensions, i.e.
 - Health and wellbeing
 - Economy and society
 - Infrastructure and environment
 - Leadership and strategy



City Resilience Framework (detail)



- **Multiple factors** contribute to resilience and there are **multiple entry points for action**

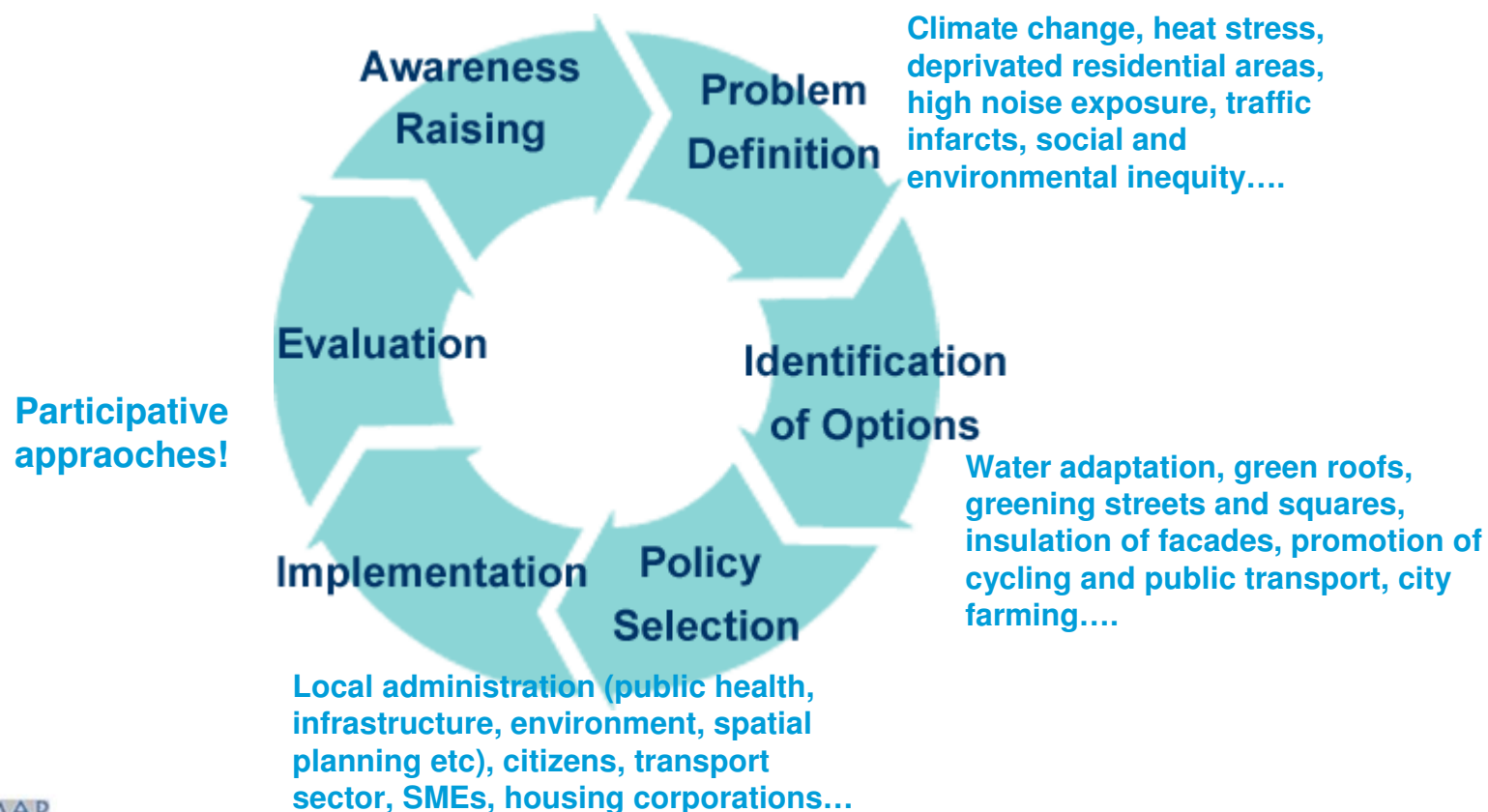


Policy integration

- Environmental Policy Integration (e.g. Lafferty and Hovden, 2003) is the **incorporation** of environmental objectives into **all stages of policy making** in non-environmental policy sectors and a commitment to **minimise contradictions** between environmental and sectoral policies by giving **principled priority** to the former over the latter.



QUA (policy) integrated into....



Quiet Urban Areas: appraisal

- Lessons learned from Rotterdam pilots on factors for appraisal of quiet urban areas

Parameter	Parameter	Correlation
Soundscape evaluation	Soundscape unpleasant_pleasant	,561
Soundscape evaluation	Soundscape annoying_relaxing	,606
Overall quality	Visual pleasantness	,524
Soundscape evaluation	Soundscape characteristic_normal	,560
Acoustic quality at home	Annoyance_at home_cars	,774
Audibility of nature sounds	Importance of nature features	,427

statistically significant $p < 0,05$



Quiet Urban Areas: appraisal

	Positive scores	Relative positive scores
Air quality	66.3%	69.6%
Safety	62.7%	63.3%
Maintenance	86.7%	78.6%
Services, and materials (banks, play-areas etc.)	79.5%	74.7%
Accessibility	92.8%	83.4%
Noise in the surrounding	72.3%	68.7%
Natural elements (green areas, water, birds etc.)	96.4%	82.8%
Climate (humidity, brightness, wind etc.)	68.7%	69.6%
Visual aspects	86.7%	79.8%
Scent	56.6%	68.1%





Inspiration

- Green and natural features
- Energy
- Social inclusion
- Public health
- Infrastructure
- Sustainable transportation
- Water management and adaptation
- Facilities, maintenance
- Etc.....



Inspiration...



Green focus areas



KRACHTGROEN

maak groen een zaak van iedereen



Bloemhof



Inspiration....

Robust

Redundant

Flexible

...conceiving systems & assets that can withstand shocks & stresses as well as using alternative strategies to facilitate rapid recovery



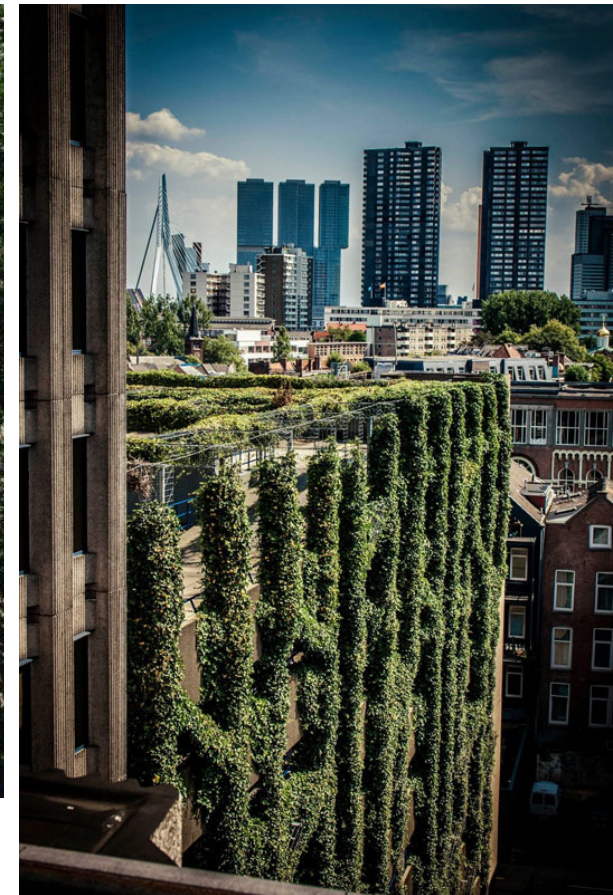
Watersquare (Van Benthemplein)



Green roofs



Green façades

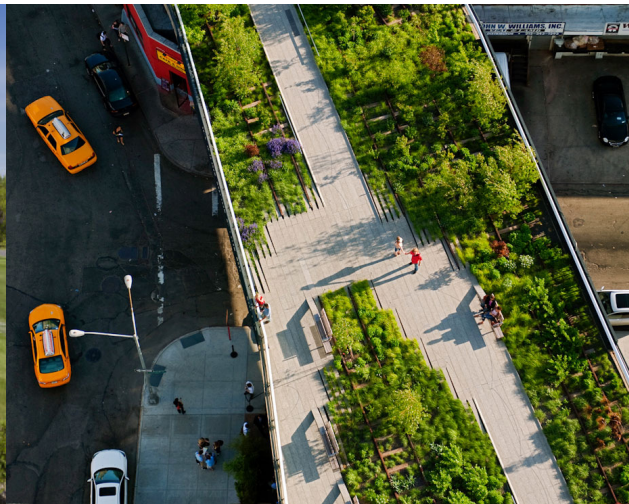


Thornico building and parking garage, source <http://www.thornicobuilding.com>

'Green at odd places'



Dakpark Rotterdam



High line New York



Promenade plantée Paris



Resilient systems



Green blue connections



Maas



Schie

Rotte



Green citizen initiatives



Rotterdam 19-20 February 2015

Concluding remarks



Questions and suggestions?

Miriam Weber Ph.D
miriam.weber@dcmr.nl



Appendix: Organ of Corti

- <https://www.youtube.com/watch?v=6S6raz1AsBsText>

